

PEACE LUTHERAN CHURCH

2021 ANNUAL REPORT



I SEE GOD WHEN I'M IN NATURE, AND THERE IS SO MUCH BEAUTY, LARGE AND SMALL, TO REMEMBER. THE CAMERA LENS NEVER CAPTURES EVERYTHING, BUT IT CAPTURES ENOUGH TO EVOKE THE MEMORY.

PHOTOS BY NANCY PETERSON

ANNUAL CONGREGATIONAL MEETING

January 30, 2022, 10:00 am

Peace Lutheran Church

2022 Annual Meeting

763.478.9406 | 3695 County Road 101 N. Plymouth, MN 55446-2907

www.peaceofplymouth.org | peace@peaceofplymouth.org

AGENDA

1. Devotions
2. Approval of Minutes from 2021 Annual Meeting vote
3. Pastor's Report
4. Election of the 2022 Congregational Council Members
5. Election of the 2022 Nominating Committee
6. Election of the Synod Assembly Delegates
7. Treasurer's Report
8. Presentation of the 2022 Budget
9. Closing Prayer and Adjournment

REPORTS

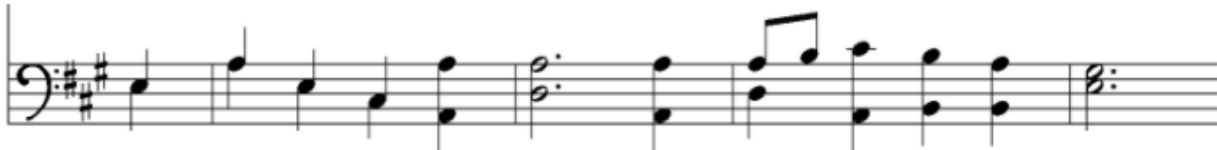
January 2021 Annual Meeting Minutes.....	pg. 3
Pastor's Report - Kjell Ferris.....	pg. 5
2021 Statistical Report.....	pg. 6
President's Report - Angela Birnbaum.....	pg. 7
Nominating Committee Report.....	pg. 8
Minister of Music Report– Stefanie Fiser Kleven.....	pg. 9
Outreach Committee Report.....	pg. 11
Youth & Family/Education Committee Report– Annie Bonow.....	pg. 12
Outreach Committee Report– Joni Sutton.....	pg. 14
Property and Operations Committee Report– Mark Stavrun.....	pg. 14
Financial Overview and Reports– Jason Tofteland.....	pg. 15

Annual Congregational Meeting

Blest Be the Tie that Binds (FESTAL SONG)



1. Blest be the tie that binds our hearts in Chris -tian love
2. Be - fore our Fa - ther's throne we pour our ar - dent prayers
3. We share our mu - tual woes, our mu - tual bur - dens bear,
4. From so - row, toil, and pain, and sin we shall be free;



the u - ni - ty of heart and mind is like to that a - bove.
our fears, our hopes, our aims are one, our com - forts and our cares.
and of - ten for each o - ther flows the sym - pa - thi - zing tear.
and per - fect love and friend - ship reign through all e - ter - ni - ty.



Congregational Annual Meeting Minutes

January 31, 2021

Agenda

- Call to order 10:15 a.m. It was determined we had a quorum.
- Devotions: Kjell
- Approval of Minutes from 2020 Annual Meeting, motion to approve by Matt Peterson., seconded by Dave Swanson, pass by poll
- Council President Angela Birnbaum: Summary of the Listening Session
- Pastor's Report: Pastor Kjell

Talked about the theme of gratitude. Being grateful for all the work being put into helping with church, with people helping run the services, thanked everyone who has helped keep our church running, there is deep sadness and don't ignore emotions, Peace has done good work, and more to be done, God is working in us. Thanked the congregation for allowing him to serve as their pastor.
- Annie Bonow: Committee Night reboot

Re-engage committee night through Zoom. Virtual committee night to meet as a large group. Hear what other people are working on and join common mission work together to move forward. How can we get more people involved? Sign-up Genius to help people volunteer and be involved. Confirmation students: tie-blanket project, thanked everyone for help with the garden service project. Introduced a new service project: Tie-blankets for Project Charity, asked the congregation to help with the project. Planned in-person event.
- Election of the 2021 Congregational Council Members

Matt Peterson announced the 2021 Congregational Council Members

President: Angela Birnbaum	Member at large: Janelle Leppa
Vice-President: Anne Stern	Member at large: Dan Anderson
Secretary: Michael Sorenson	Member at large: Erin Jopke
Treasurer: Jason Tofteland	

Motion to approve: Dick Knutson, seconded: Pam Johnson. Motion approved by poll.
- Election of the 2021 Nominating Committee

2020 Nominating Committee members have agreed to serve in 2021: Randy Berg, Lisa Lukis, Matt Peterson, two more members from outgoing council members will be chosen later. Angela calls for approval. Motion: Don Davidson, seconded: Angela Akigbhe, approved by poll.

Congregational Annual Meeting Minutes (cont.)

January 31, 2021

- Election of the Synod Assembly Delegates
The Minneapolis Area Synod Assembly is an online conference, April 23-24. Lisa Lukis, Michael Sorenson, Annie Bonow as alternate, Mirah Lukis.
- Election of the 2021 Nominating Committee
2020 Nominating Committee members have agreed to serve in 2021: Randy Berg, Lisa Lukis, Matt Peterson, two more members from outgoing council members will be chosen later.
Angela calls for approval. Motion: Don Davidson, seconded: Angela Akigbhe, approved by poll
- Election of the Synod Assembly Delegates
The Minneapolis Area Synod Assembly is an online conference, April 23-24. Lisa Lukis, Michael Sorenson, Annie Bonow as alternate, Mirah Lukis
- Treasurer's Report
Jason highlighted a surplus of around \$18,000. A portion is a PPP loan. Explained the purpose of the PPP loan is to help offset payroll cost. Loan is forgiven if shown used for payroll. Received \$35,000. Explained how to read the budget. Motion 2020 Treasurer's report: Peter Leppa, s second: Pam Hughes. Approved by poll.
- Presentation of the 2021 Budget
Pledges are down from 2020. Looking into this year with more follow-ups. Fairly conservative on giving and expenses. Overall, we are projecting a shortage of about \$36,000 which includes the PPP loan. Ending funds around \$15,000. Taking a look at pledging going into 2022. A second PPP loan is included in the budget. Motion to approve: Don Davidson. Second: Matt Peterson. Approved by poll.
- Closing Prayer and Adjournment
Angela thanked everyone for their hard work and participation in church. Pastor Kjell gave closing prayer.
Motion to adjourn the meeting: David Kleppe. Second: Angela Akigbhe. Adjourn time: 11:03 a.m.

Respectfully submitted,

Michael Sorenson

Council Secretary

Pastor's Report | 2021

Together in Love — Colossians 3

Times of chaos are not uncommon for God and God's people. We have clung to the rock of faith and been held by the grace of God... a grace that is abundant in scripture. Verses from the book of Colossians has been our centering prayer:

Above all things put on love, which holds all things together. And let the peace of Christ rule in your hearts, to which indeed you were called in the one body. And be thankful. Let the word of Christ dwell in you richly; teach and admonish one another in all wisdom; and with gratitude in your hearts sing psalms, hymns, and spiritual songs to God. And whatever you do, in word or deed, do everything in the name of the Lord Jesus, giving thanks to God the Father through him. Colossians 3:14-17.

What is the best way to describe the last two years? "Coaxing order out of the chaos" is one way. The tumult of these "COVID times" drives us to seek control but research says planning doesn't resolve transitional, unsettling times. In traditional planning processes, groups will: describe the current state, envision the preferred future, and create a plan to close the gap. This is a linear process but times of chaos are not linear at all but cyclical; we learn, unlearn, revisit, and then challenge from a slightly different vantage point.

These words from Colossians ground us in God's love, open us to God's action and free us to participate in God's unfolding future, amongst the chaos. God's love gives us the courage to dream, even as we don't have a clear picture of the present. We say... "we are on the other side of the pandemic", except we are not, or we say, "people are settling into their new worship patterns," except they are not. Rooted in Jesus' love we sing psalms, hymns, and spiritual songs to God knowing that the future will behave differently from the past.

Healthy participation in God's unfolding future looks like us naming driving questions, by asking, "What are the real world adaptive challenges we are facing?" These "driving questions" are not currently answerable, but once answerable they will significantly alter the way we approach ministry.

Two examples of driving questions are:

- What is the future of our buildings if ministry isn't limited by place?
- What does discipleship look like in a time when people are less likely to attend programs?

As your clergy leader, I am also wondering what driving questions are you asking? Learning from these questions and the future as it emerges will require experimentation and intentional reflection. We will do this creative ministry work in God's love, while held by the love-force of the universe that we call Jesus Christ and praying: Give us faith to go out with good courage, not knowing where we go, but only that your hand is leading us and your love supporting us, through Jesus Christ our Lord. Amen

In Christ's Peace,



Pastor Kjell Ferris

Statistics | 2021 Report

1. Baptized Membership at end of 2020:	284
2. Baptized Members received during 2021:	
A. By Baptism: children (15 years and younger)	2
B. By Baptism: adults (16 years and older)	0
C. By affirmation of faith	0
D. By transfer	0
E. From other sources and statistical adjustment	0
F. Total members received this year	+ 2
3. Baptized Members removed during 2021:	
A. By death	4
B. By transfer	14
C. For other reasons and statistical adjustment	0
D. Total members removed this year	-14
4. Baptized Membership, end of 2021:	272
5. Total confirmed membership, end of 2021:	170
6. Number of baptized youth who were confirmed in 2021:	0
7. Average weekly in-person worship attendance in 2021:	39*
8. Average weekly online views in 2021:	80
9. Total number of people (including children) actively participating in the life of the congregation in 2021:	282

* In-person worship resumed on Ash Wednesday, Feb17, and counts were taken most Sundays beginning April 4, 2021.

President's Report | 2021

Dear Fellow Peace Members,

This past year was a time of discovery for Peace as we considered where we are and where we want to be in the future. Council members who served in 2020 continued through 2021 and were Anne Stern, Michael Sorenson, Jason Tofteland, Janelle Leppa, Erin Jopke, Dan Anderson, Angela Birnbaum, and Pastor Kjell.

The year kicked off with several listening opportunities for member including an all-member listening session, survey, and phone calls that set the stage for the year. From our January listening session conversations, four main themes were identified as important: worship, communication, pastoral (congregational) care, and connections. A new task force consisting of Randy Berg, Annie Bonow, Matt Peterson, Valerie Sorenson, and Videll Pfeifer was formed to aid council in reviewing overall goals for Peace.

We took advantage of the resource Bridge Builders which aids congregations in focusing on opportunities for moving forward. Bridge Builder consultants (Jerry Wahl and Mary Halverson) provided insight and helped us define certain aspects of our church. Through this process we identified church priorities and developed communication tools. Consensus was established around building on the categories that emerged from the Vision team: Connect, Care, and Celebrate. These vision goals have also been consistent throughout past cottage meeting notes, the listening sessions this past year, and were apparent in the Bridge Builder assessment. Continuing with the Bridge Builder process we held two "Bucket Filling: Care, Connect & Celebrate" sessions to explore ways to enact our vision. The next step will be to expand and act on our bucket filling ideas.

Beginning with the Ash Wednesday service we were able to restart in-person services after nearly one year of online only services. Resuming in-person events and activities have helped us to reconnect to our church community. We took advantage of the great outdoors with parking lot services and the Welcome Sunday Carnival.

Even though we are still not operating as we did pre-pandemic, we were able to define a new normal that is closer to where we were prior to 2020. Our restrictive environment this past year and a half has elucidated the importance of human interaction and our community. Although we have the ability to worship in-person we still have a segment of the congregation who do not feel comfortable meeting in-person or discovered the benefits of online capabilities. The flexibility we have gained from having to adjust our way of life, and how we interact as a congregation provides mechanisms that can help us adapt to different needs of current and future members.

I would like to take this opportunity to thank all of those who have given of their time and talents to serve on Council, the task force, and our various church committees. It has been an honor to serve as your Council President these past two years.

I would like to take this opportunity to thank all of those who have given of their time and talents to serve on Council, the task force, and our various church committees. It has been an honor to serve as your Council President these past two years.

Peace,

Angela Birnbaum

Council President

Nominating Committee Report | 2021

The Nominating Committee is pleased to present the following slate of candidates. All current seven council members have agreed to serve on the 2022 Peace Lutheran Church Council.

- Jennifer Stoffel
- Janelle Leppa
- Lisa Lukis
- Inger Trooien
- Erin Jopke
- Angela Akhigbe
- Becky Gabbert

Election of the 2022 Nominating Committee (3). Two additional committee members will be appointed from the 2022 Council.

Election of the Synod Assembly Delegates (2):

The Minneapolis Area Synod Assembly will be Saturday, April 30, 2022

Minister of Music Report | 2021

There is a lot to reflect on from the year 2021 at Peace Lutheran Church.

We began the year with worship available only virtually. Little by little we began meeting in person again, slowly returning to the Sanctuary, and also worshipping outside on some beautiful summer mornings.

Many would say there has been a lot of change. We have adapted some of our methods to mitigate the spread of the coronavirus. We miss those who are no longer attending Peace Lutheran. We have worked with Bridge Builders in an effort to better listen to and communicate with each other.

It would be natural, and easy, to focus on loss and scarcity; humans are good at that. However, I prefer to consider that we have much to CELEBRATE.

This fall we returned to weekly in-person worship in the Sanctuary. People are attending in person and also tuning in online. With our masks on, we can gather together, worship God, and SING together.

We resumed Peaceful Nights on Wednesdays with programs for elementary schoolers, middle schoolers, and adults. We have kids participating in two music ensembles, and we're having regular rehearsals of Adult Choir and Adult Bells.

During Advent we presented two annual events. First, the CROSS+Generational Christmas Pageant, Sing We All Noel, telling the story of Jesus' birth with songs, handbells, and original dialogue. It was truly a collaborative production with many people contributing their time and skills. Second, we explored the importance of Jesus coming to earth as a baby in our Music Festival, A Child is Born.

Through these events especially, I witnessed a great number of people who CARE. People who make the effort to show up, to pitch in and help, and to be a part of something bigger than themselves. Each person's contribution matters – we can be successful with a little bit from everyone.

Minister of Music Report | 2021 (cont.)

And so I say thank you. My gratitude for the people of Peace Lutheran Church cannot be measured or expressed. In addition to being a part of our music program, and helping it thrive, so many folks have helped me out with my own needs and my family's needs. It is remarkable and I am grateful that I have experienced the love of God in these ways. Surely, this is one thing that a Christian community is for.

Who else needs this kind of CONNECTION as we look ahead to the future? I pray we will all work together in love to discern our neighbors' needs.

In gratitude and with joy,

Stefanie

**Stefanie Fiser Kleven,
Minister of Music**



The Adult Choir at the Music Festival, December 19, 2021



The kids of the Christmas Pageant, December 12, 2021



The Adult Bells at the Music Festival, December 19, 2021

Outreach Committee | 2021

The Outreach Committee has a focus on publicizing the great things that happen at Peace, both to the surrounding community and to our own members. The committee works closely with church office staff.

During the Lenten season, our committee prepared gift bags that were delivered to some of our more homebound members. After so many months of near solitude because of Covid-19, we hope they were able to enjoy the contents of their bags, and that they know how much they are loved and appreciated by their church family. A special thank-you goes out to the youth who created artwork and to those Peace members who volunteered to make deliveries.

Second Sunday has been missing from our Sunday mornings in 2021. Our committee hopes to revive this tradition in 2022 with necessary precautions in place. If your group, or if a small group of friends, would like to serve treats this winter or spring, please sign up on the sheet on the bulletin board – near the flower sign-up. The goal is to keep it simple and safe.

Welcome Baskets are a project that our committee has worked on for a few years. If you know of anyone who could use a little TLC in the form of a gift basket, please let any of us on this committee know, and we'll be sure to have something for you to deliver to a friend or neighbor.

In our monthly PeaceNotes publication, we continue to highlight Peace members who are living out their vocation. If you know of someone at Peace who you think should be featured, let the members of this committee know.

Beginning in September, we were able to once again start having greeters at the door before worship. Even without a handshake, and with a smile hidden behind a mask, know that these greeters are there to sincerely welcome all who attend Sunday morning worship.

One year ago, this committee's annual report said that we looked forward to "the day we can worship together in person, enjoy fellowship with one another face to face, and work together to spread the word about Jesus and about Peace." With grateful hearts, we are now able to do this, even if things like communion and the Sharing of the Peace look a bit different than they did before Covid. We have much to be thankful for!

Be sure to contact this committee if there are things you'd like to work on with us.

In Christ,

Joni Sutton

Outreach Committee Chair

Committee Members: Pam Johnson, Judy Lubben, Joni Sutton

Children, Youth & Family Report | 2021

The year of 2021 was a time of transition for the Children, Youth, and Family Committee. We started the year in the midst of online worship and virtual youth programming. Over the spring and summer students and families were able to gather together at Peace and attend summer camp. By the fall we were teaching classes in-person and enjoying fellowship in the building again. The culmination of the year was a wonderful production of the Christmas story on December 12 in which the children of Peace shared the love of Jesus through song and story.

Winter Highlights:

- *Wednesday Night Virtual Programming:* Students continued their study of the parts of worship using a curriculum written by Spirit and Truth Publishing, a local independent faith formation publishing company.
- *Palm Sunday Slideshow:* Students illustrated the story of Palm Sunday and recorded a slideshow narration that was used during worship!
- *Blanket Tying Project:* Both adults and children gathered at Peace to create several fleece tie blankets that were then donated to the House of Charity in Minneapolis.

Winter Highlights:

- *Wednesday Night Virtual Programming:* Students continued their study of the parts of worship using a curriculum written by Spirit and Truth Publishing, a local independent faith formation publishing company.
- *Palm Sunday Slideshow:* Students illustrated the story of Palm Sunday and recorded a slideshow narration that was used during worship!
- *Blanket Tying Project:* Both adults and children gathered at Peace to create several fleece tie blankets that were then donated to the House of Charity in Minneapolis.

Spring Highlights:

- *Easter Egg Hunt:* Thanks to the leadership of Nancy Peterson, Peace hosted a community Easter Egg hunt. Members of the congregation, friends, grandchildren and neighbors joined the fun for an outdoor celebration of the Easter season.
- *Spring Picnic:* Families joined together around the campfire for hotdogs and s'mores. We played games and celebrated the conclusion of the 2020-2021 program year.
- *Outdoor Games Ribbon Cutting:* The CYF committee used fundraising dollars to outfit the church with several new outdoor toys and games, including a new basketball hoop!

Summer Highlights:

- *Ice Cream Truck:* Always a fan favorite! CYF sponsored a visit from an ice-cream truck after worship as a part of the summer camp kick-off event.
- *Camp Amnicon Day Trip:* Several elementary aged students spent the day with two Camp Amnicon counselors playing, hiking, canoeing and swimming at French Lake Regional Park.
- *Camp Amnicon Canoe Trip:* Youth from Peace, along with friends from Fellowship Missionary Baptist Church shared a week-long camping adventure along the Namekagon River near Lake Superior's shores in northern Wisconsin.

Children, Youth & Family Report | 2021 (cont.)

Fall Highlights:

- *"Change the World" Carnival:* The CYF Committee helped to plan the Welcome Sunday carnival event. It was a great kick-off to the program year.
- *In-Person Sunday School:* Confirmation, Pre-Confirmation and Elementary Sunday School classes resumed in person. We are filling the classrooms with games, lessons and fun. A special thanks to Pastor Kjell, Stefanie Fiser Kleven, Amanda Bickley, Peter Leppa, Janelle Leppa, Deb Weir and Annie Bonow for teaching our youth this fall.
- *Lutheran Live:* The first season of Lutheran Live was a smash hit! The confirmation students explored the themes of the Small Catechism as they interviewed congregation members. Season 2 starts in January! Thank you Heidi Ferris for leading this endeavor.
- *Peace Retreat:* Peace members found rest and fellowship along the shores of Lake Carlos at Luther Crest Bible Camp in Alexandria, MN. Thank you Lisa Lukis for organizing this event.

Advent and Christmas:

- *"Sing We All Noel" Christmas Pageant:* Stefanie Fiser Kleven led an amazing program. The weeks of hard work leading up to the event paid off. The morning felt like a celebration, plus the milk and cookie reception following the event was delicious!
- *Lefse Making:* Thanks to Mike Onan for teaching the art of Lefse making to both kids and adults!

Overall, the Children, Youth, and Family Committee has been blessed to be a part of the ministry of Peace Lutheran Church. We enjoy sharing our gifts and talents with the congregation and we are looking forward to continued planning and fellowship in 2022.

Submitted by

Annie Bonow

Property and Operations Report | 2020

The Peace Building Committee has been more active now that the building is being actively used by the congregation. In 2021 the committee completed the following maintenance tasks:

- Painted kitchen, rear hallways, old narthex & nursery bathroom.
- Replaced nursery bathroom light fixture.
- Added plastic shelving under the dishwashing station & a stainless steel work counter to the serving area of the kitchen.
- Trimmed & mulched trees
- Replaced the batteries in the emergency exit lights
- Replaced batteries in flush valve in men's bathroom
- Replaced the shelf under the dish & flower garden.
- Replaced fixture ballast in one light fixture in the office.
- Replacement of furnace filters on their normal replacement schedule (we have switched out filters in inventory from MERV 7 to MERV 13 to filter smaller particles)
- Fixed broken stall in original women's bathroom also adjusted sliding lock on the other women's bathroom stall.
- Repair to post indicator valve out in front yard of church
- Cleaning & servicing of RTU's
- Repaired cracks in roof skylight in gathering area
- Unclogged condensate drain for air handler
- Filled floor drains with water to stop sewer gas from leaking into the kitchen & other areas. The floor drains need to be filled on occasion because water evaporates.
- Installed pulpit lights
- Added new flood lights in sanctuary
- Replaced VFD that provides heat to the sanctuary
- And many other small jobs throughout the year

Members of the committee continue to make walk-thru's to check the building out, usually on Wednesdays or Sundays, the intent is to identify issues before they become real problems.

Many thanks to Jack Bacon, Tim Hughes and David Forsberg for making walk-thru's and taking on tasks as they arise. Special thanks & recognition to David Forsberg for his knowledge of the heating systems & other important building systems. Also, special thanks to Jack Bacon for all his work painting, installing shelving & yardwork.

Respectfully submitted,

Mark Staurum

Property and Operations Committee Chair

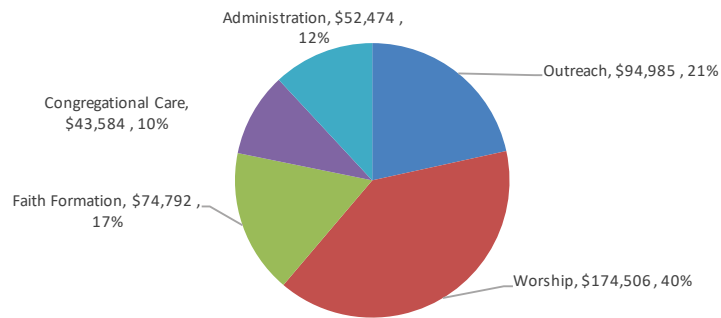
Treasurer Report | 2021

2021 Summary

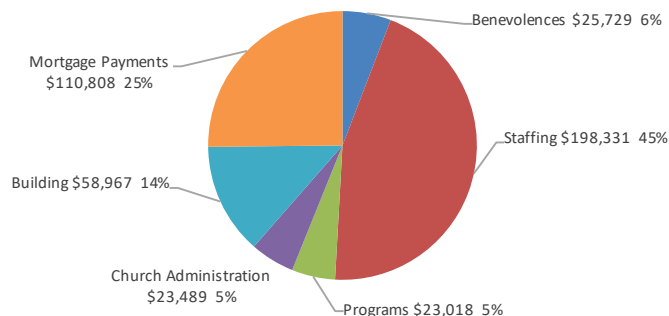
Peace Lutheran Church of Plymouth Financial Summary - 2021

	Operating/ Mortgage Funds	Designated Funds	All Funds
Receipts	\$ 409,327*	\$ 47,332	\$ 456,659
Disbursements			
Benevolences	\$ 15,202	\$ 10,527	\$ 25,729
Staffing	\$ 196,810	\$ 1,521	\$ 198,331
Worship	\$ 2,163	\$ 4,904	\$ 7,067
Music Ministry & Music Instrument Tuning	\$ 691	\$ -	\$ 691
Children/Youth/Family Ministries	\$ 897	\$ 7,326	\$ 8,223
Outreach	\$ 301	\$ -	\$ 301
Fellowship	\$ 154	\$ 2,936	\$ 3,090
Health Ministry	\$ -	\$ 3,645	\$ 3,645
Church Administration	\$ 23,049	\$ 440	\$ 23,489
Building	\$ 58,967	\$ -	\$ 58,967
Mortgage Payments	\$ 110,808	\$ -	\$ 110,808
Total Disbursements	\$ 409,041	\$ 31,299	\$ 440,341
Net Receipts / (Disbursements)	\$ 286	\$ 16,033	\$ 16,319

Peace Lutheran Church 2021 Disbursements by Program



Peace Lutheran Church 2021 Disbursements by Account



* Includes \$35k PPP loan that was fully forgiven

Treasurer Report | 2021

Budget Summary

Peace Lutheran Church - 2022 Budget Overview

Receipts				Expenses			
	2021 Budget	2021 Actual	2022 Budget		2020 Actual	2021 Budget	2022 Budget
Pledges	\$251,000	\$257,000	\$229,000	Benevolences	\$ 15,000	\$ 15,000	\$ 15,000
Estimates	\$103,000	\$97,000	\$116,000	Staff	\$ 194,000	\$ 222,000	\$ 197,000
Loose Offering	\$1,500	\$1,000	\$1,500	Programs	\$ 5,000	\$ 10,000	\$ 4,000
Facility Usage/Other	\$47,000	\$54,000*	\$30,600**	Church Administration	\$ 22,000	\$ 22,000	\$ 23,000
Total Budget	\$402,500	\$409,000	\$377,100	Building Operations	\$ 51,000	\$ 61,000	\$ 59,000
				Debt Service	\$ 108,000	\$ 108,000	\$ 111,000
				Total Expenses	\$395,000	\$438,000	\$425,000

2022: 69 budgeted households

2021: 73 budgeted households

Peace Lutheran Church Receipts Profile

2022 Budget vs 2021 Budget Expenses			
Salary Increases (3%)	(\$15,500)		
Benefit Cost Increase	\$1,000		
Other Staff Expenses	\$0		
Program Expenses	(\$1,700)		
Office Administration	(\$1,000)		
Utilities	\$2,300		
Contracted Services	\$500		
Other Building Costs	\$1,000		
Total	(13,400)		

Parish nurse is not included in the 2022 budget

Overall

	2021 Budget	2021 Actual	2022 Budget
Receipts	\$ 402,000	\$ 409,000	\$ 377,000
Expenses	\$ 438,000	\$ 409,000	\$ 424,000
Net Surplus/(Deficit)	(\$36,000)	\$0	(\$47,000)
Beginning Fund Balance	\$ 51,000	\$ 51,000	\$51,000
Change in Fund Balance	(\$36,000)	\$0	(\$47,000)
Ending Fund Balance	\$15,000	\$51,000	\$4,000

Mortgage Balance

	2013 Refinanced Loan	2018	2019	2020	2021	2022 (Projected)
Mortgage Balance	1,702,000	1,474,000	1,422,000	1,367,820	1,311,724	1,254,000
Mortgage Payments		108,000	108,000	108,100	108,100	108,100
Interest Rate		3.875%	3.875%	3.875%	3.875%	3.875%
Interest rate is variable and adjusts every 5 years - next adjustment date is June 2026. At current payment rate, mortgage will be fully paid in 2038.						

Note - all \$'s rounded to \$000s

* Other includes \$35k PPP loan that was fully forgiven

Treasurer Report | 2021

Peace Lutheran Church of Plymouth Comparative Balance Sheets

	2020	2021
<u>Assets</u>		
Checking & Savings Accounts		
General/Mortgage Fund	\$ 50,495	\$ 50,786
Designated Funds	38,200	52,034
Capital Campaign Funds	19,200	21,472
Checking & Savings Accounts Total	\$ 107,895	\$ 124,292
 Endowment Fund as of November 30th	 \$ 46,852	 \$ 47,748
 Property and Equipment		
Land	30,332	30,332
Building & Improvements	3,412,124	3,412,124
Furniture & Equipment	229,225	229,225
Total Property and Equipment	\$ 3,671,681	\$ 3,671,681
Total Assets	\$ 3,826,428	\$ 3,843,721
 <u>Liabilities and Fund Balance</u>		
Liabilities:		
ELCA MIF Mortgage	\$ 1,367,820	\$ 1,311,724
Total Liabilities	\$ 1,367,820	\$ 1,311,724
 Fund Balance	 2,458,608	 2,531,997
Total Liabilities and Fund Balance	\$ 3,826,428	\$ 3,843,721

Treasurer Report | 2021

Peace Lutheran Church of Plymouth Combined General Fund/Mortgage Funds Summary Statement of Cash Receipts and Disbursements

	2020 Actual	2021 Budget	2021 Actual	2022 Budget
General Fund/Mortgage Fund Receipts	\$ 414,651	\$ 402,200	\$ 409,327	\$ 377,100
Disbursements				
Benevolences	\$ 15,200	\$ 15,000	\$ 15,202	\$ 15,000
Staffing	\$ 194,252	\$ 221,563	\$ 196,810	\$ 206,820
Programs	\$ 5,237	\$ 9,850	\$ 4,206	\$ 8,150
Church Administration	\$ 22,379	\$ 21,577	\$ 23,049	\$ 20,500
Building	\$ 50,839	\$ 62,054	\$ 58,967	\$ 65,870
Mortgage Payments	\$ 108,108	\$ 108,100	\$ 110,808	\$ 108,100
Total Disbursements	\$ 396,015	\$ 438,144	\$ 409,041	\$ 424,440
Net Receipts / (Disbursements)	\$ 18,636	\$ (35,944)	\$ 286	\$ (47,340)

Staffing Summary

Staffing

Salary/Housing	\$ 140,534	\$ 161,221	\$ 140,097	\$ 145,550
Benefits/Taxes	\$ 49,681	\$ 52,542	\$ 51,021	\$ 53,470
Worship Leaders & Musicians	\$ 2,300	\$ 2,800	\$ 2,300	\$ 2,800
Mileage Reimbursement	\$ 147	\$ 2,300	\$ 1,357	\$ 2,300
Other	\$ 1,589	\$ 2,700	\$ 2,035	\$ 2,700
Total Staffing	\$ 194,252	\$ 221,563	\$ 196,810	\$ 206,820

Scheduled Hours per

2022 Budgeted Staff:

Lead Pastor

Choir Director

Office Specialist

Communications - Contractor

Organist/Accompanist

Nursery

Week

Full Time

14

17

6

8

4.5

Benefits Offered

Medical/Retirement/Disability/Life

None

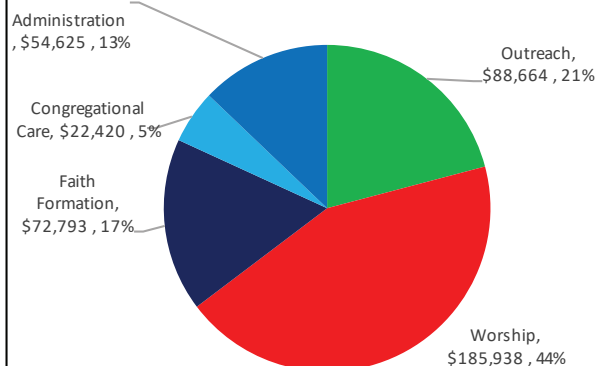
None

None

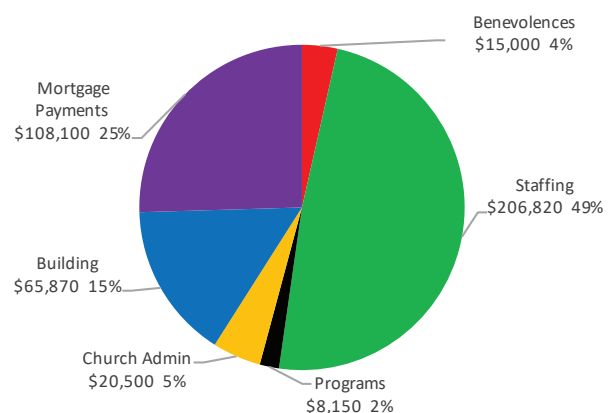
None

None

Peace Lutheran Church 2022 Budget by Program



Peace Lutheran Church 2022 Budget by Account



Treasurer Report | 2021

Peace Lutheran Church of Plymouth
Combined General Fund/Mortgage Fund
Detailed Statement of Cash Receipts and Disbursements

	<u>2020 Actual</u>	<u>2021 Budget</u>	<u>2021 Actual</u>	<u>2022 Budget</u>
<u>Receipts</u>				
Regular Offering	\$ 369,308	\$ 354,000	\$ 354,992	\$ 345,000
Thrivent Choice	404	300	392	300
Facility Usage	7,600	11,400	17,570	15,300
Interest Income & Other	37,339	36,500	36,373	16,500
Total Receipts	\$ 414,651	\$ 402,200	\$ 409,327	\$ 377,100
<u>Disbursements</u>				
<u>Benevolences</u>				
ELCA	\$ 8,000	\$ 8,000	\$ 8,000	\$ 8,000
Undesignated		7,000		7,000
Africa - Maasae Girls School	3,000		3,000	
IOCP			2,800	
Jonathan House			542	
Treehouse			360	
House of Charity			300	
Other	4,200		200	
Total Benevolences	\$ 15,200	\$ 15,000	\$ 15,202	\$ 15,000
<u>Staffing</u>				
Salary/Housing	\$ 140,534	\$ 161,221	140,097	\$ 145,550
Benefits/Taxes	49,681	52,542	51,021	53,470
Worship Leaders & Musicians	2,300	2,800	2,300	2,800
Mileage Reimbursement	147	2,300	1,357	2,300
Other	1,589	2,700	2,035	2,700
Total Staffing	\$ 194,252	\$ 221,563	\$ 196,810	\$ 206,820
<u>Program Expenses</u>				
Worship Materials	\$ 2,696	\$ 2,250	\$ 2,163	\$ 2,250
Music Ministry	98	1,000	116	1,000
Musical Instruments Maintenance	280	2,400	575	2,400
Youth/Children/Family Ministries	1,541	1,700	897	1,000
Camps	367	0		0
Outreach	0	1,000	301	500
Fellowship	255	1,000	154	500
Health Ministry	0	500	0	500
Total Program Expenses	\$ 5,237	\$ 9,850	\$ 4,206	\$ 8,150
<u>Church Administration</u>				
Office Services	\$ 16,042	\$ 15,577	\$ 18,180	\$ 15,000
Office Supplies	3,029	1,500	768	1,500
Offering Envelopes	440	400	379	400
Postage	516	1,200	1,338	1,200
Liability Insurance	2,011	1,900	1,858	1,900
Miscellaneous	342	1,000	527	500
Total Church Administration	\$ 22,379	\$ 21,577	\$ 23,049	\$ 20,500
<u>Building</u>				
Utilities	\$ 19,291	\$ 22,644	\$ 25,084	\$ 25,000
Contracted Services	17,715	24,660	19,378	25,220
Property Insurance	5,874	5,750	5,428	6,650
Repairs & Maintenance	6,044	5,000	7,109	5,000
Supplies & Misc Building Expenses	1,914	4,000	1,967	4,000
Property Assessment	0	0	0	0
Total Building	\$ 50,839	\$ 62,054	\$ 58,967	\$ 65,870
<u>Mortgage Payments</u>	\$ 108,108	\$ 108,100	\$ 110,808	\$ 108,100
Total Disbursements	\$ 396,015	\$ 438,144	\$ 409,041	\$ 424,440
Net Receipts / (Disbursements)	\$ 18,636	\$ (35,944)	\$ 286	\$ (47,340)
Beginning General/Mortgage Fund Cash Balance	\$ 31,865	\$ 50,501	\$ 50,501	\$ 50,786
Change in Fund Balance	18,636	(35,944)	286	(47,340)
Ending General/Mortgage Fund Cash Balance	\$ 50,501	\$ 33,169	\$ 50,786	\$ 3,446

Treasurer Report | 2021

Peace Lutheran Church of Plymouth Designated Funds Statement of Receipts and Disbursements

	12/31/2020				12/31/2021	
	Balance	Adjustments	Receipts	(Disburse)	Balance	
Benevolences						
Bloom Early Learning	\$ -				\$ -	
Dominican Republic Mission	-				-	
Good Samaritan Fund	-				-	
IOCP	-	150	1,300	(1,249)	\$ 201	
Carnival		(150)	1,348	(1,198)	\$ -	
LSS Refugee Services		-	8,052	(8,000)	\$ 52	
World Hunger	-				\$ -	
Total Benevolences	\$ -	\$ -	\$ 10,700	\$ (10,447)	\$ 253	
Program Designated Funds						
Camps	\$ 4,789	\$ -	\$ 3,693	\$ (6,456)	\$ 2,026	
Family/Youth/Children - Other	2,345			(870)	\$ 1,475	
Health Ministries	1,283	-		-	\$ 1,283	
Music Ministries	-	-	-		\$ -	
AED	-	-	2,098		\$ 2,098	
Worship Ministries	1,827	80	2,600	(3,880)	\$ 627	
Total Program Designated Funds	\$ 10,244	\$ 80	\$ 8,391	\$ (11,206)	\$ 7,509	
Capital Improvements						
Bell Tower	\$ 2,205	\$ -	\$ -	\$ -	\$ 2,205	
Kitchen	2,585	-	200	-	\$ 2,785	
Furnace	-	-	13,193		\$ 13,193	
Building Repairs	-	-	-	-	\$ -	
Total Capital Improvements	\$ 4,790	\$ -	\$ 13,393	\$ -	\$ 18,183	
Memorials (Undesignated)	\$ 4,861	\$ -	\$ 2,425	\$ (1,521)	\$ 5,765	
Pass-Through	650	-	5,104	(5,110)	\$ 644	
Peacefull Nights	4,069	-	1,203	(2,936)	\$ 2,335	
WELCA	155	-	-	-	\$ 155	
Gifts Received - Restricted for Future	13,396	-	3,873	(80)	\$ 17,189	
Total Designated Funds	\$ 38,009	\$ 80	\$ 45,089	\$ (31,300)	\$ 52,034	
Capital Campaign						
Receipts	\$ 146,879		\$ 2,243		\$ 149,122	
Parking Lot	(58,300)				\$ (58,300)	
Sanctuary Projector Upgrade	(5,500)				\$ (5,500)	
Sign	(50,850)				\$ (50,850)	
Bloom Early Learning (10% of receipts)	(13,000)				\$ (13,000)	
Total Capital Campaign	\$ 19,229	\$ -	\$ 2,243	\$ -	\$ 21,472	



Peace Lutheran Church Staff



Lead Pastor
Office Manager
Minister of Music
Organist

Rev. Kjell Ferris
Chris Bacon
Stefanie Fiser Kleven
Anne Phillips

3695 County Road 101 N. Plymouth, MN 55446
peace@peaceofplymouth.org || www.peaceofplymouth.org